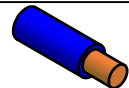
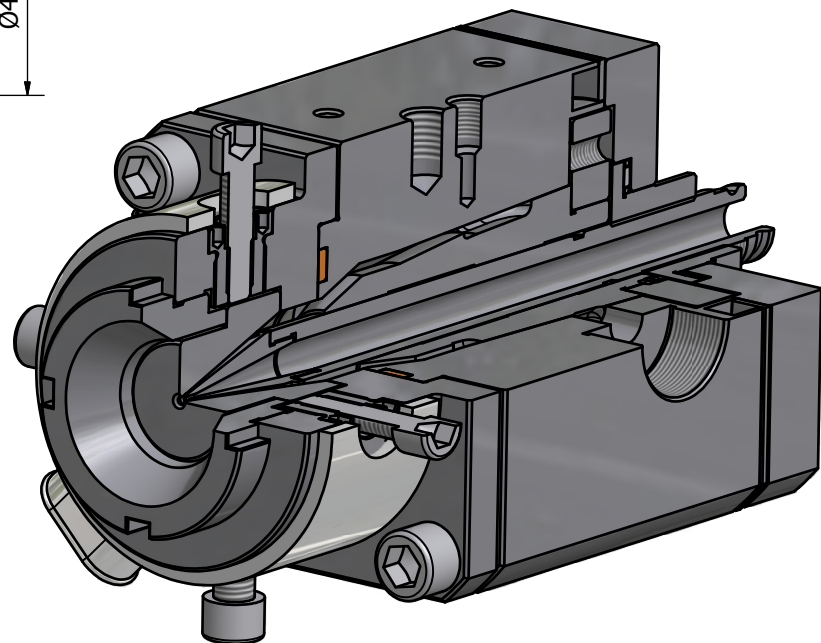
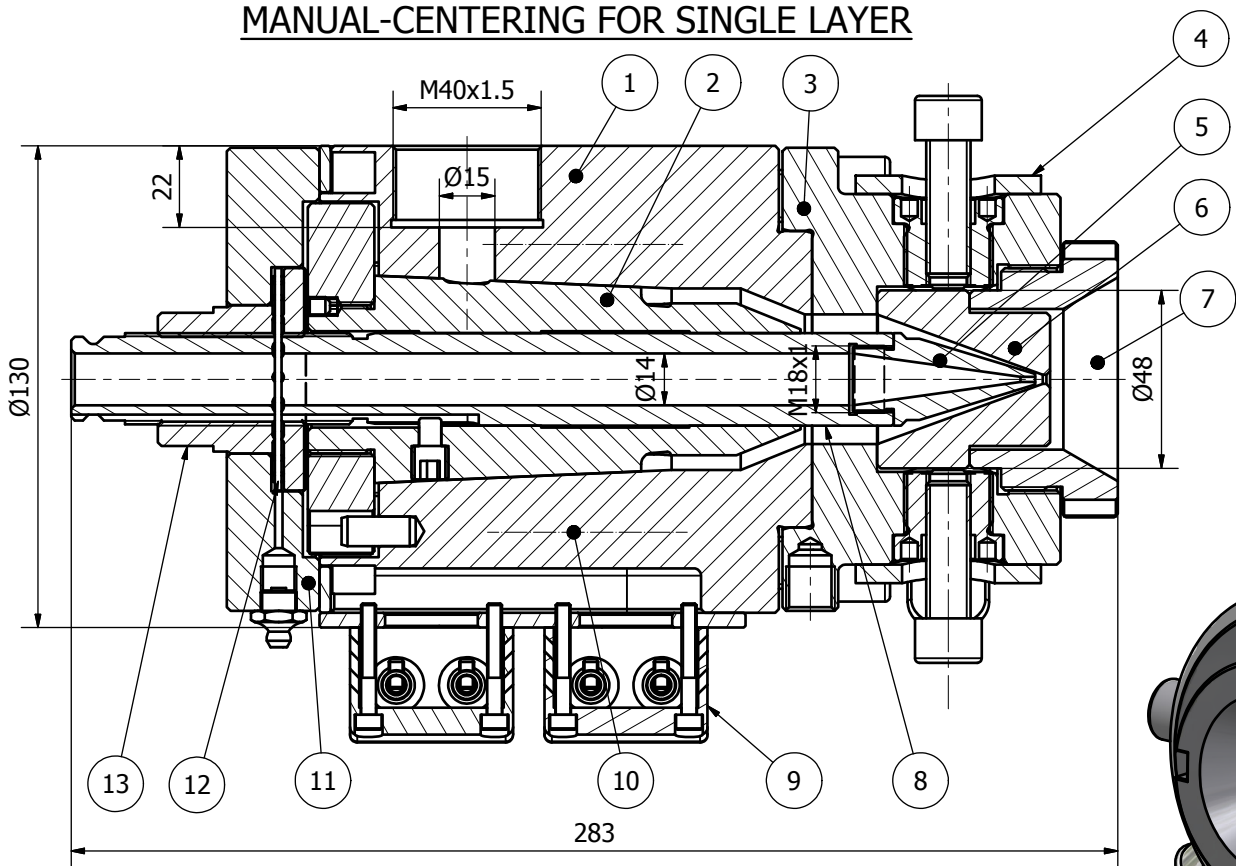


CROSSHEAD ECM12-M

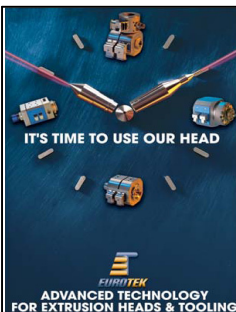
MANUAL-CENTERING FOR SINGLE LAYER

APPLICATIONS	
	SINGLE LAYER

MAX CONDUCTOR: 12mm
MAX OVER INSULATION: 20mm
MAX PASSAGGE DIE: 25mm



ITEM	DESCRIPTION
1	HEAD BODY
2	CARTRIDGE
3	FRONT PLATE
4	HEATHER
5	TIP
6	DIE
7	ADJUSTING DIE NUT
8	HOLDING WIRE GUIDE
9	POWER CONNECTION
10	H. CARTRIDGES
11	THRUST BEARING PLATE
12	BALL BEARING
13	NUT FOR HOLDING WIRE GUIDE



CROSSHEAD ECM12-M

EUROTEK S.r.l.
 66034 LANCIANO (Ch)- Italy
 Phone:(+39) 0872 72581 FAX:(+39) 0872 711978
www.eurotek-italy.it
 E-mail: info@eurotek-italy.it

