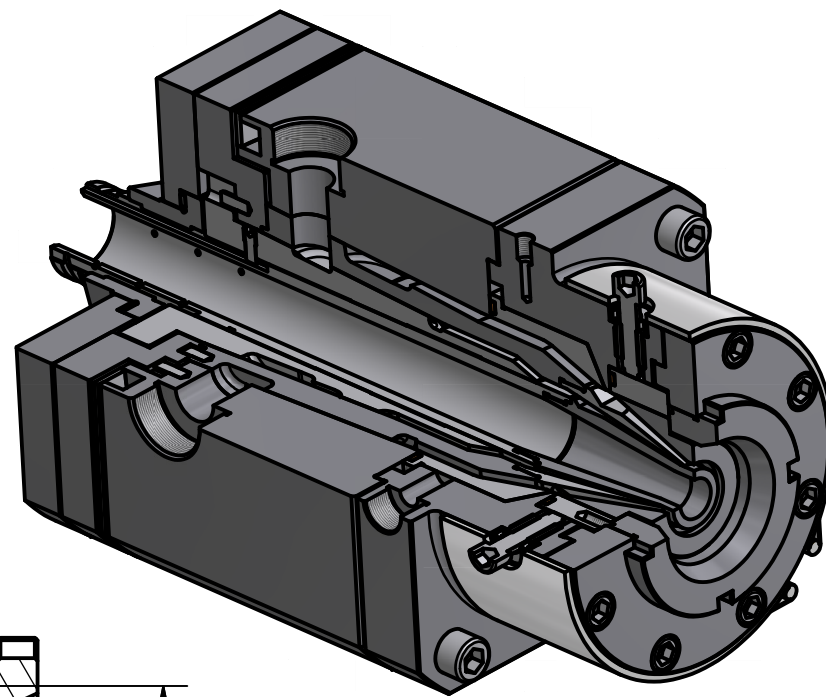
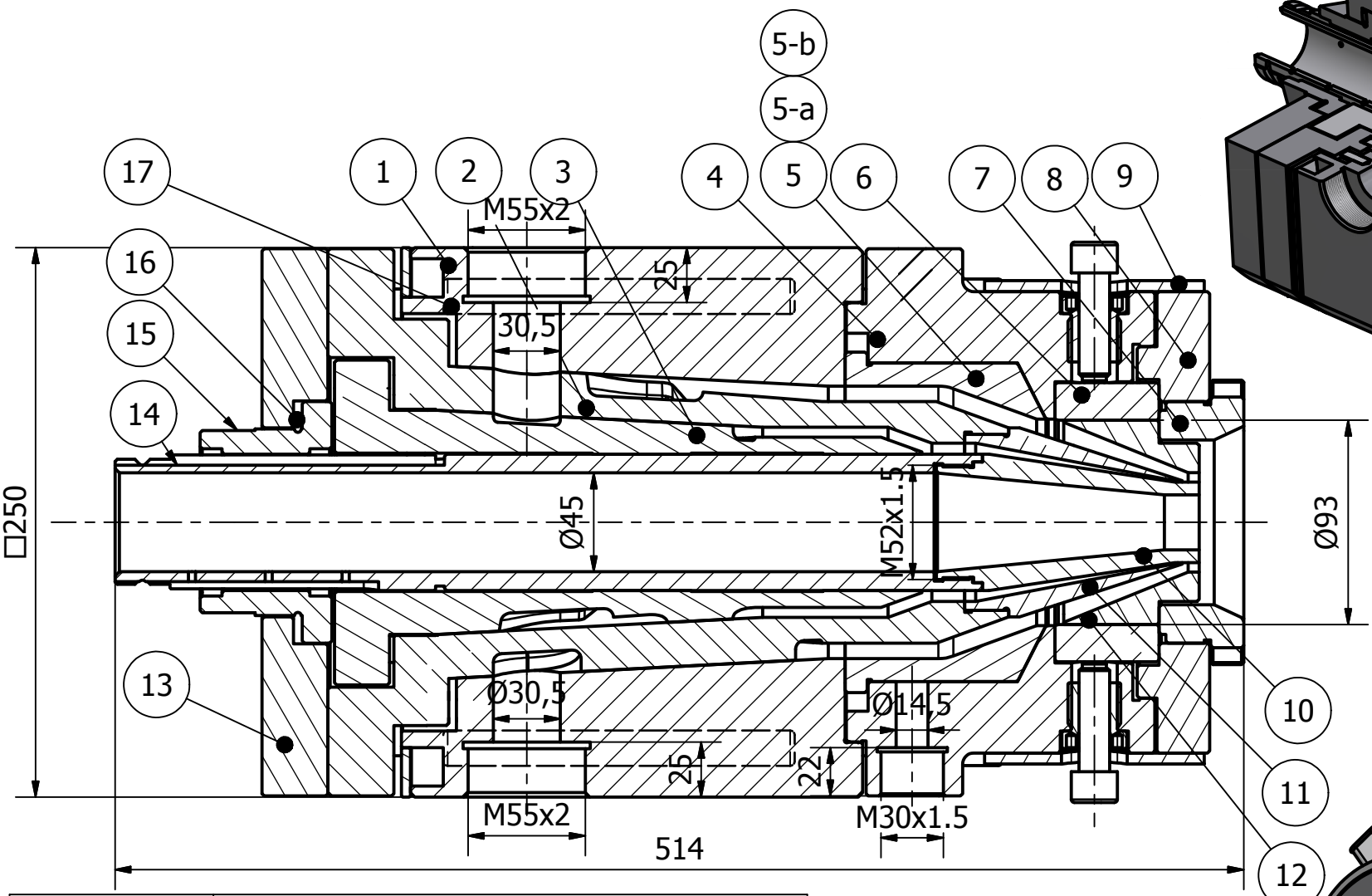
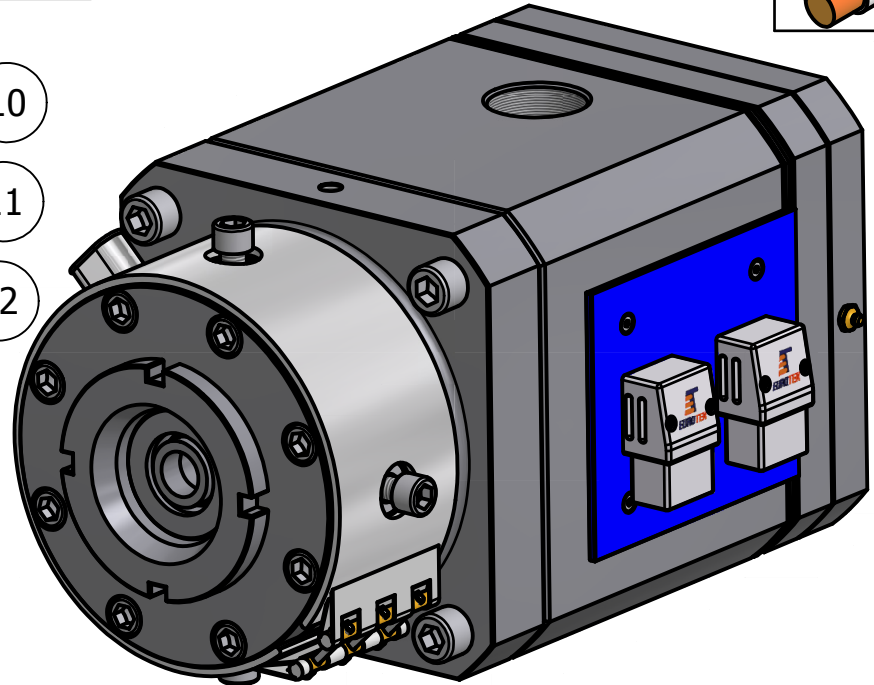


CROSSHEAD ECM40-3S

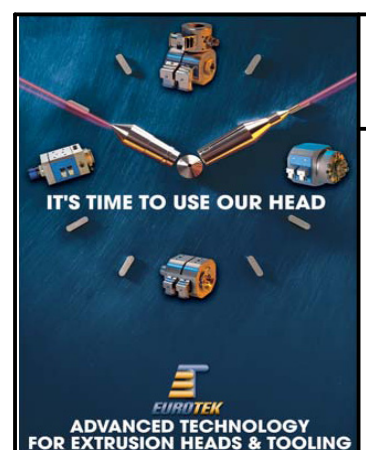


APPLICATIONS	
	SINGLE LAYER
	DUAL LAYER
	STRIPING
	SKIN
	DUAL LAYER + STRIPING
	DUAL LAYER + SKIN

MAX CONDUCTOR: 40mm
 MAX OVER INSULATION: 50mm
 MAX PASSAGE DIE: 60mm



ITEM	DESCRIPTION
1	HEAD BODY
2	OUTER CARTRIDGE
3	INNER CARTRIDGE
4	FRONT PLATE
5	NEUTRAL RING
5-a	RING FOR SKIN
5-b	RING FOR STRIPE
6	HOLDING DIE
7	ADJUSTING DIE NUT
8	HOLDING DIE NUT
9	HEATER 1600W
10	TIP
11	INTERMEDIATE DIE
12	BOTTOM DIE
13	THRUST BEARING PLATE
14	HOLDING WIRE GUIDE
15	ADJUSTING NUT FOR H. WIRE GUIDE
16	BALL BEARING
17	H. CARTRIDGES



CROSSHEAD ECM40-3S

EUROTEK S.r.l.
 66034 LANCIANO (Ch)- Italy
 Phone:(+39) 0872 72581 FAX:(+39) 0872 711978
www.eurotek-italy.it
 E-mail: info@eurotek-italy.it

