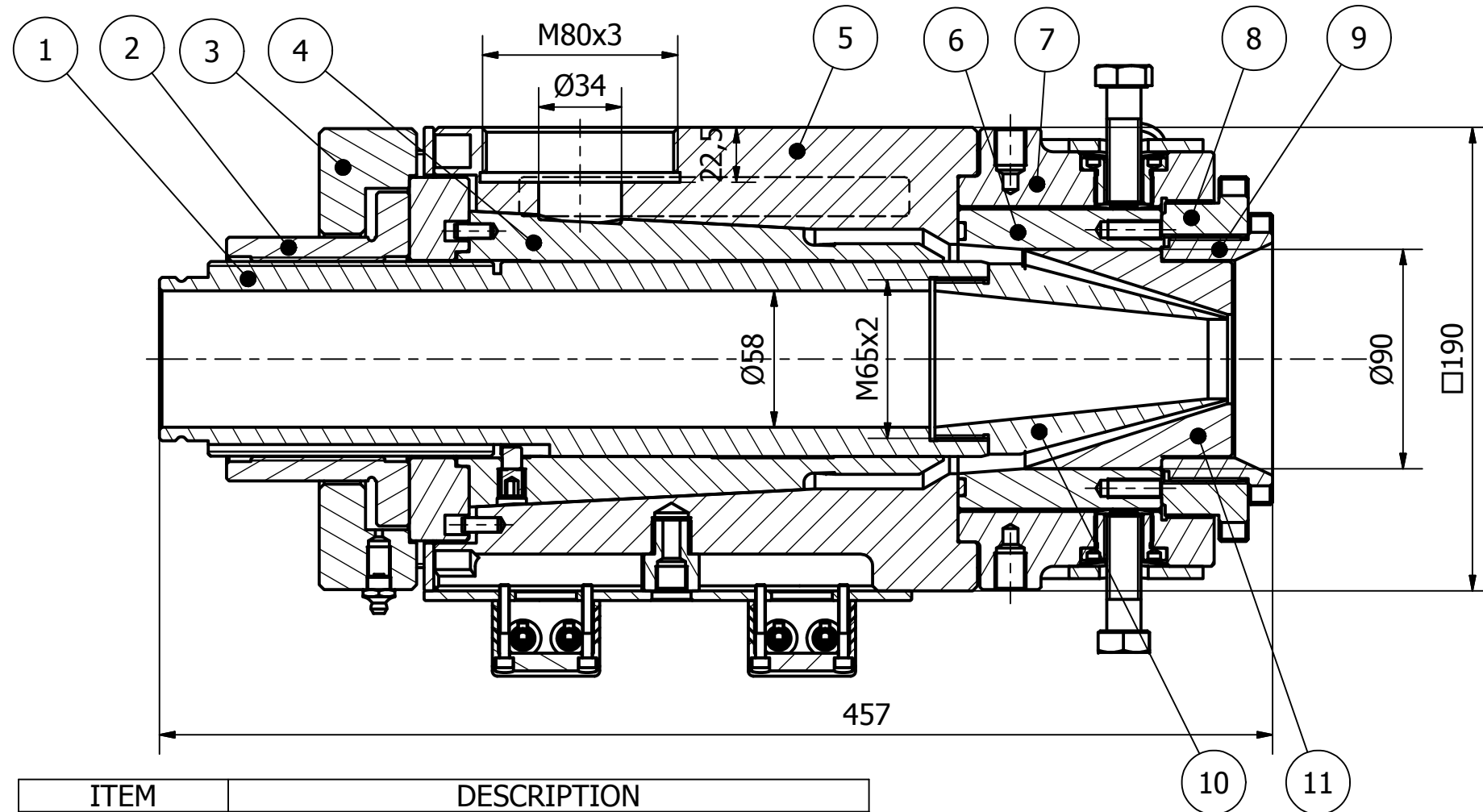
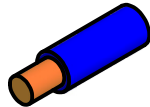


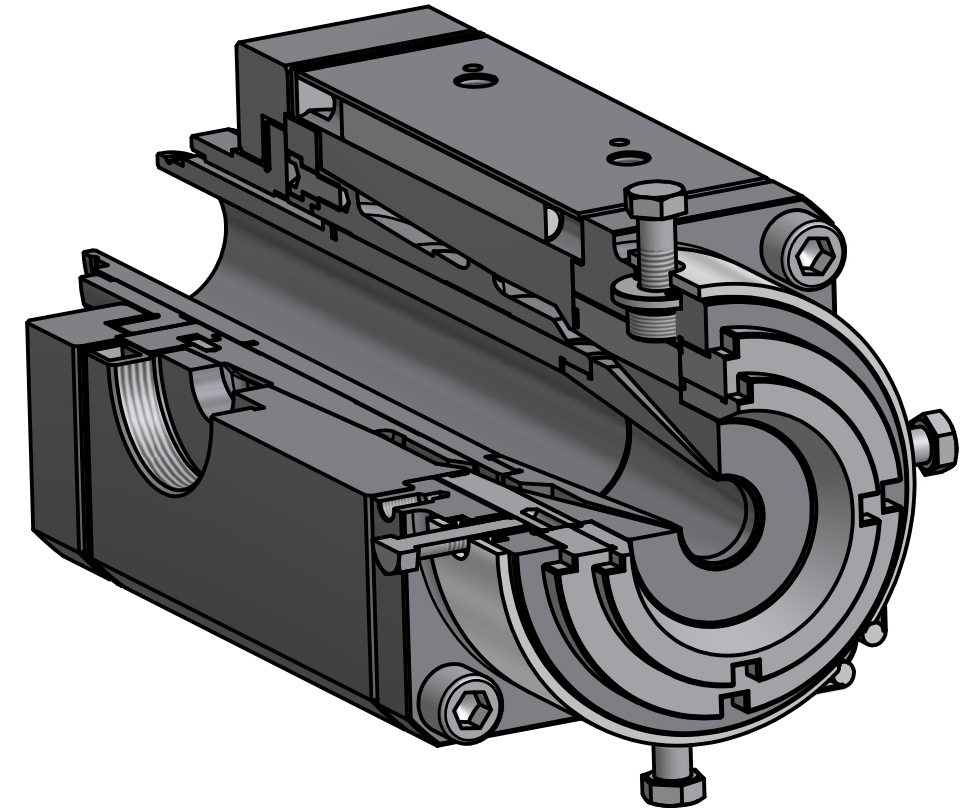
CROSSHEAD ECM55-M

MANUAL CENTERING FOR SINGLE LAYER



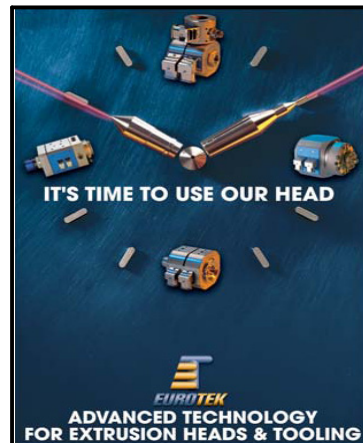
APPLICATIONS	
	SINGLE LAYER

MAX CONDUCTOR: 55mm
MAX OVER INSULATION: 60mm
Ø MAX DIE DIAMETER : 65mm



ITEM	DESCRIPTION
1	HOLDING WIRE-GUIDE
2	ADJUSTING NUT FOR HOLDING WIRE-GUIDE
3	THRUST BEARING PLATE
4	CARTRIDGE
5	HEAD BODY WITH H. CARTRIDGES
6	HOLDING DIE FOR MANUAL CENTERING
7	FRONT PLATE
8	HOLDING NUT FOR HOLDING DIE
9	ADJUSTING DIE NUT
10	TIP
11	DIE

ELECTRICAL POWER (CARTRIDGE AREA): 3000W
 ELECTRICAL POWER (DIE AREA) : 800W



CROSSHEAD ECM55-M

EUROTEK S.r.l. C.da Villa Andreoli,215/A
 66034 LANCIANO (Ch)- Italy
 Phone:(+39) 0872 72581 FAX:(+39) 0872 711978
www.eurotek-italy.it
 e-mail:info@eurotek-italy.it

